

## ABOUT US

We are a team of experienced care managers dedicated to helping Minnesota families find the right care solutions for their individual needs.

We specialize in all types of senior living and services:

- Assisted Living
- Memory Care
- Private/Home Care
- Residential Care Homes
- Care Suites/Enhanced Care
- Nursing Homes/Skilled Nursing
- Independent Living
- Adult Day Programs
- Rehab/Respite
- Hospice

## OUR REPUTATION

Our clients describe us as caring, passionate advocates for their loved ones. See all of our testimonials at [www.twincitiescare.com/reviews](http://www.twincitiescare.com/reviews)

Our 5-star reviews say it all!



**Call for your free and confidential consultation today!**



Trusted Senior Living Advisors

Phone: 612-268-3500  
Fax: 612-285-3530  
[help@twincitiescare.com](mailto:help@twincitiescare.com)



[www.twincitiescare.com](http://www.twincitiescare.com)



Trusted Senior Living Advisors



## SEARCHING FOR SENIOR CARE?

We help Minnesota families find the best senior living solutions



Trusted Senior Living Advisors

# WE'RE HERE TO HELP

We pour our hearts into each and every case as if it were our own family



Ready to discuss your options?



**ANNE IWANIN**

Care Coordinator  
Family Liaison

[help@twincitiescare.com](mailto:help@twincitiescare.com)



**612-268-3500**

## OUR PROMISE

We are on a mission to improve the quality of life of our seniors. We see helping seniors as a privilege and we work hard to make a difference in the lives of those we serve!

Our service comes at no cost to you.  
All fees paid by care providers.

## OUR TEAM



**JONATHAN ROSENBERG**

Care Manager  
Owner/Founder

612-285-3555

[jonathan@twincitiescare.com](mailto:jonathan@twincitiescare.com)

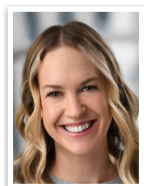


**BECCA MYSLIVECEK**

Care Manager  
South/Southwest Metro

952-697-9500

[becca@twincitiescare.com](mailto:becca@twincitiescare.com)



**LISA MURPHY**

Care Manager  
Minneapolis/Central Metro

612-778-5550

[lisam@twincitiescare.com](mailto:lisam@twincitiescare.com)



**CHRISTINE PETTERSON**

Care Manager  
North/Northwest Metro

763-233-2888

[christine@twincitiescare.com](mailto:christine@twincitiescare.com)



**KARLI DUXBURY**

Care Manager  
West/Southwest Metro

612-778-9500

[karli@twincitiescare.com](mailto:karli@twincitiescare.com)



**JENNIFER STEBBINS**

Care Manager, LSW  
St. Paul/East Metro

651-724-4333

[jennifer@twincitiescare.com](mailto:jennifer@twincitiescare.com)



**DIANA JORGENSEN**

Care Manager  
East/Southeast Metro

651-758-3330

[diana@twincitiescare.com](mailto:diana@twincitiescare.com)



**WENDY REINHARD**

Care Manager  
Minneapolis/West Metro

612-429-0777

[wendy@twincitiescare.com](mailto:wendy@twincitiescare.com)